


7-30-12

- Plasmid Preps:
- (2) K081014
 - (2) K174015
 - (2) I13401

Plated 4 Nitrate Detectors

- Streaked Plates w/single colonies:
- I13401 (2)
 - K081014 (2)
 - K174015
- 

- Liquid Cultures: of ~~Arsenic P~~
- Arsenic Promoter
 - Lead Promoter

- Basic Upkeep
- Plates
 - LB
 - solⁿs
 - etc.

PCR of Parts: (6 total)

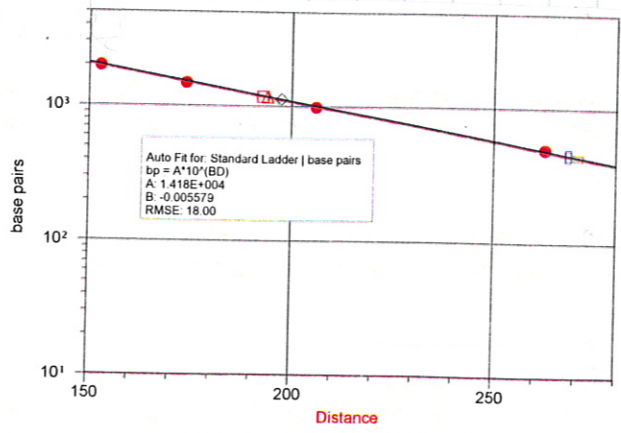
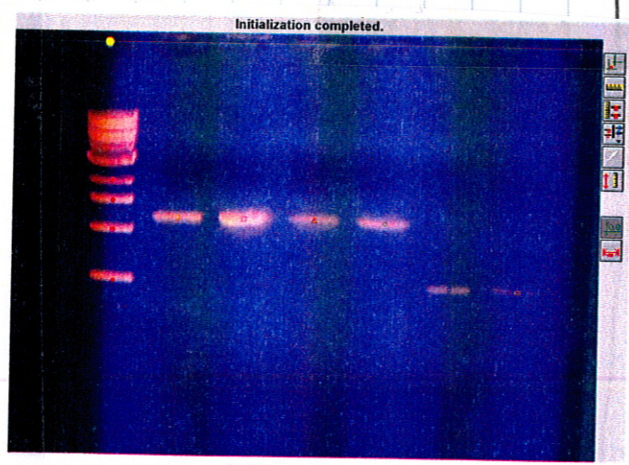
- I13401 (2)
- K081014 (2)
- K174015 (2)

Enzyme Solution:

dH ₂ O	16.5	* 6.6 = 109.9
Buffer	2.5	= 16.5
MgCl ₂	1.5	= 9.9
dNTPs	1	= 6.6
VF ₂	1	= 6.6
VR	1	= 6.6
Taq	.5	= 3.3
	<u>24</u>	

6cl:

- I1
- I2
- K01
- K02
- K11
- K12



	Standard Ladder		I13401 #1		I13401 #2		K081014 #1		K081014 #2		K174015 #1		K174015 #2	
	D	bp	D	bp	D	bp	D	bp	D	bp	D	bp	D	bp
1	263	500	193	1190	193	1190	194	1173	197	1124	268	452	270	439
2	206	1000												
3	174	1500												
4	153	2000												
5														
6														
7														

SIGNATUR