

6/11/12

-PCR

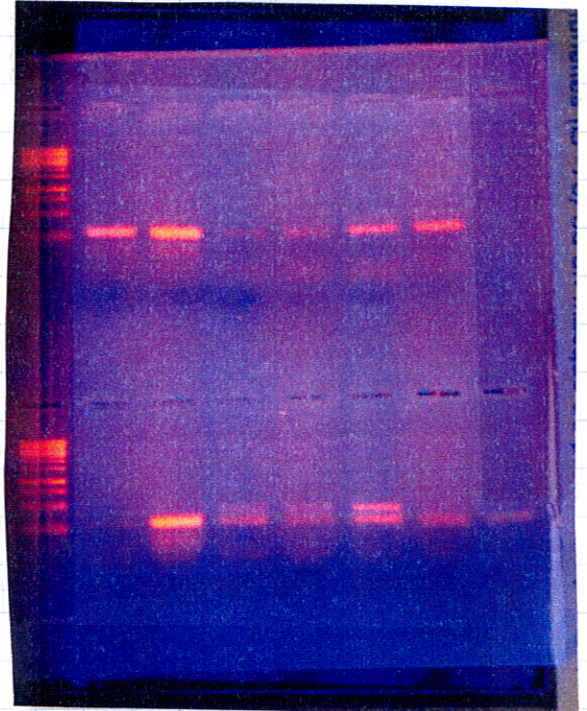
Enzyme	Solution	
dH <sub>2</sub> O	17 $\lambda$	$\times 14 = 238$
Buffer	2.5 $\lambda$	$= 35$
MgCl <sub>2</sub>	1.5 $\lambda$	$= 21$
VR	1 $\lambda$	$= 14$
VF <sub>2</sub>	1 $\lambda$	$= 14$
dNTP	1 $\lambda$	$= 14$
Taq	.5 $\lambda$	$= 7$
	<u>* 24 <math>\lambda</math></u>	

\* really 24.5  $\lambda$  this time  
and 25  $\lambda$  the other times  
but just be consistent

-gel

Ladder ~~XXXXXXXXXX~~

-PCR gel



6/12/12

Ran gel

Top	1 KB Ladder	1 Digest	1-C digest	2 digest	2-C digest	3 digest	3-C digest
Bottom	1 KB Ladder	4 digest	4-C digest	5 digest	5-C digest	6 digest	6-C digest

- Only 3 Digest showed a band  
- large at bottom  
- faint at top  
- others = not viable

