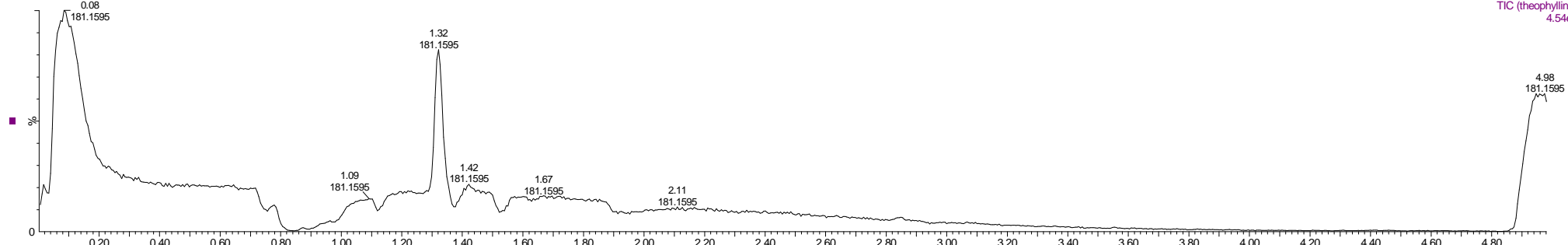


Ingmar

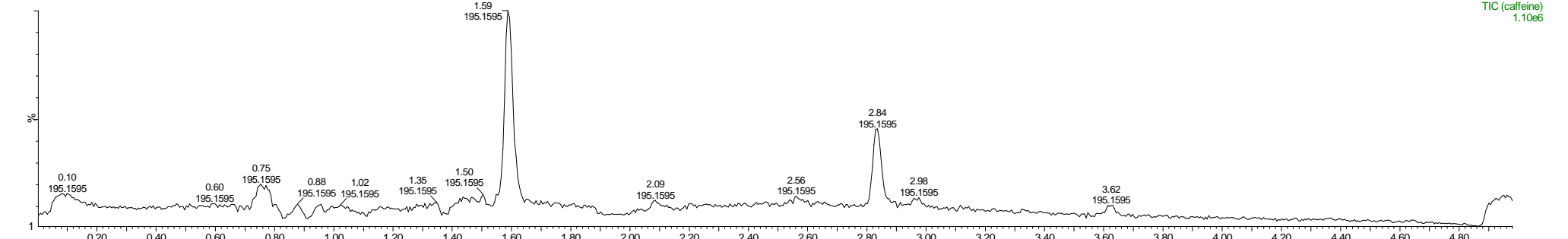
25102012 kasette2



25-Oct-2012 09:16:40

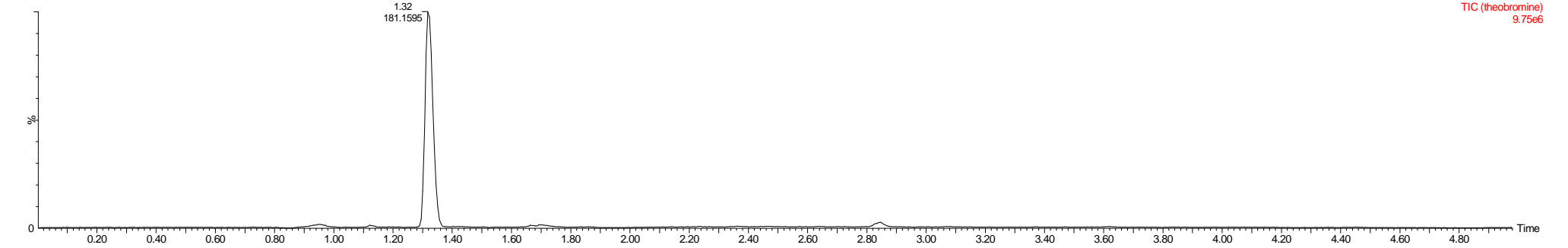
3: MRM of 4 Channels ES+  
TIC (theophylline)  
4.54e6

25102012 kasette2



2: MRM of 4 Channels ES+  
TIC (caffeine)  
1.10e6

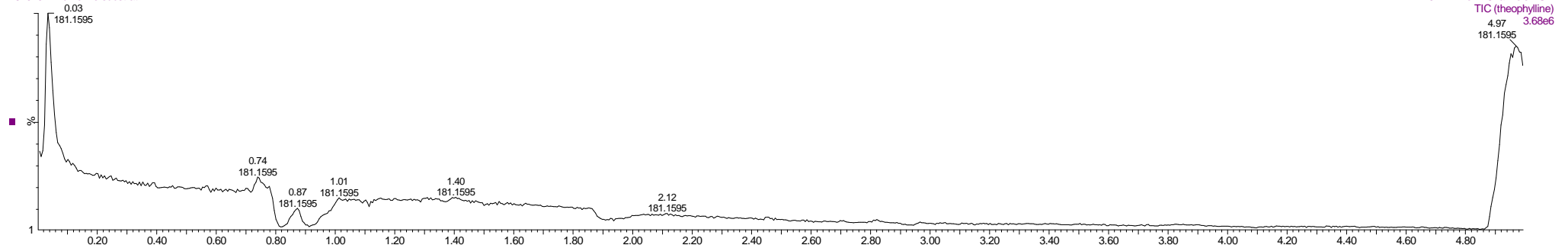
25102012 kasette2



1: MRM of 4 Channels ES+  
TIC (theobromine)  
9.75e6

Ingmar

25102012 nu2 ohne substrat

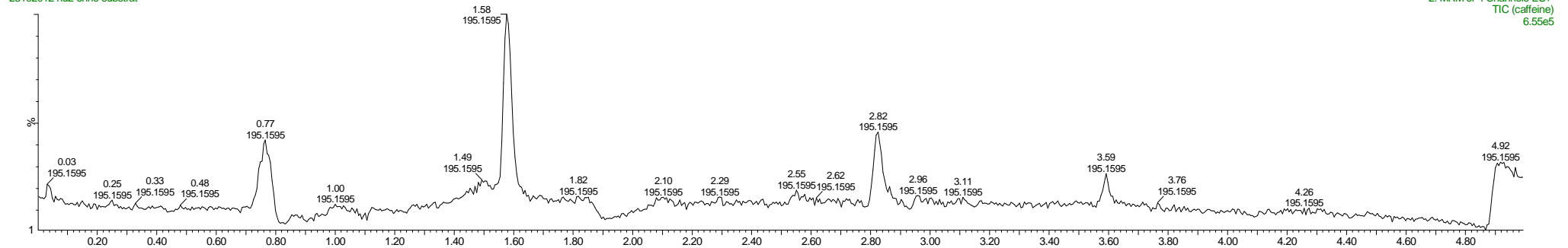


25-Oct-2012 09:44:18

3: MRM of 4 Channels ES+ TIC (theophylline)

3.68e6

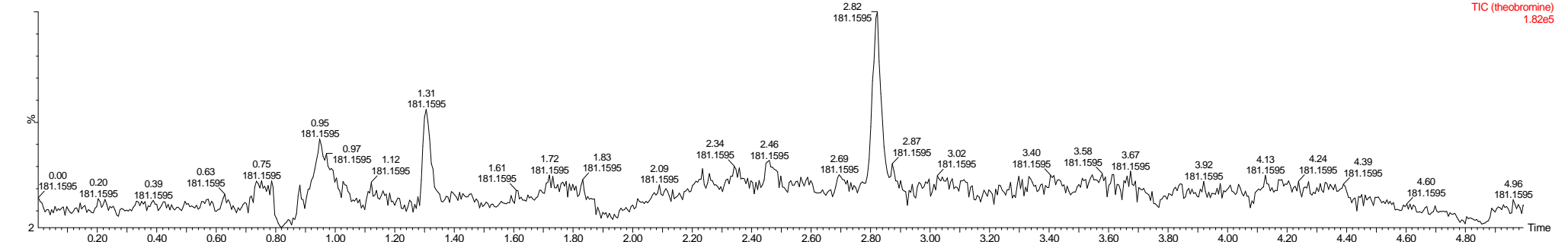
25102012 nu2 ohne substrat



2: MRM of 4 Channels ES+ TIC (caffeine)

6.55e5

25102012 nu2 ohne substrat



1: MRM of 4 Channels ES+ TIC (theobromine)

1.82e5

Ingmar

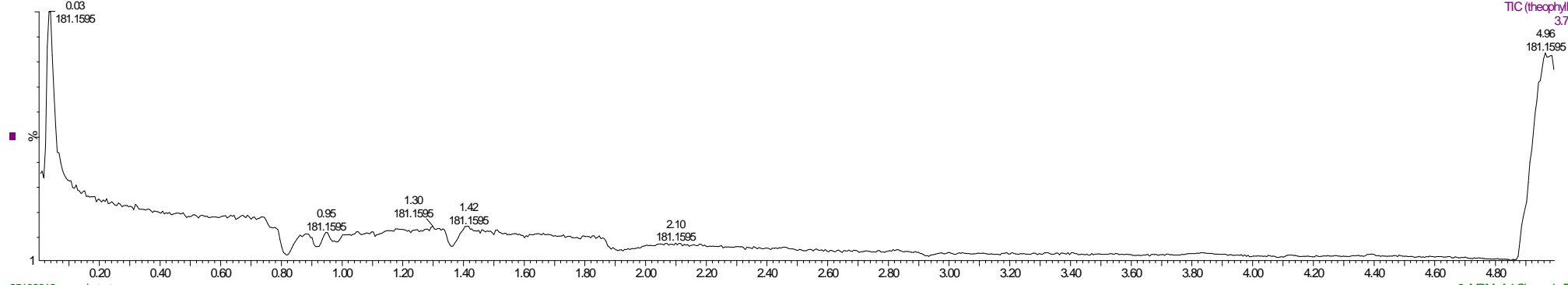
25102012 u + substrat

25-Oct-2012 09:49:50

3: MRM of 4 Channels ES+

TIC (theophylline)

3.78e6

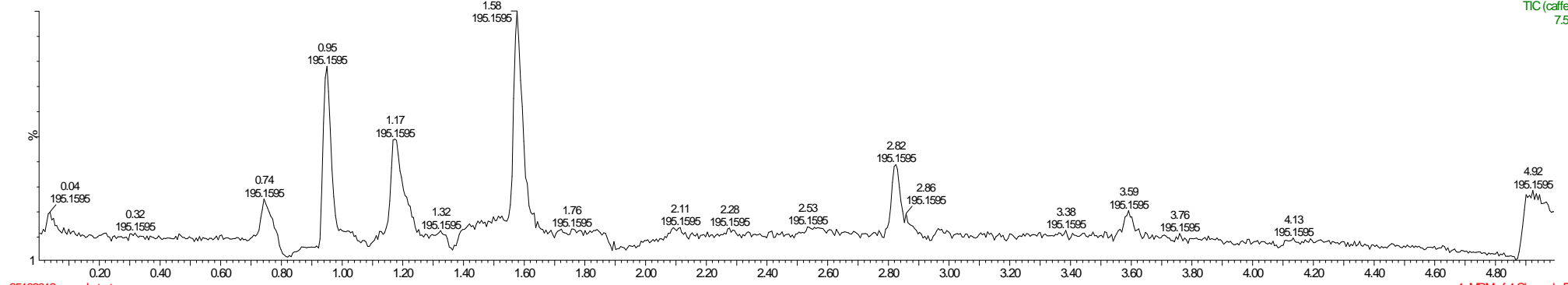


25102012 u + substrat

2: MRM of 4 Channels ES+

TIC (caffeine)

7.57e5

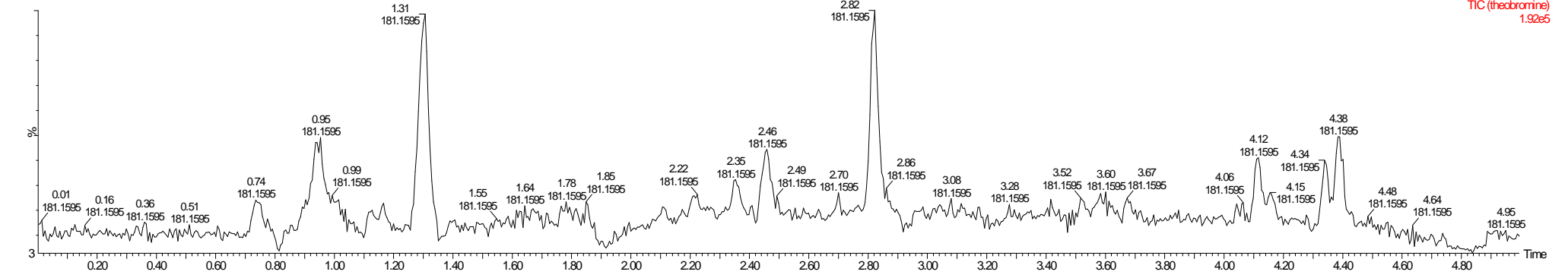


25102012 u + substrat

1: MRM of 4 Channels ES+

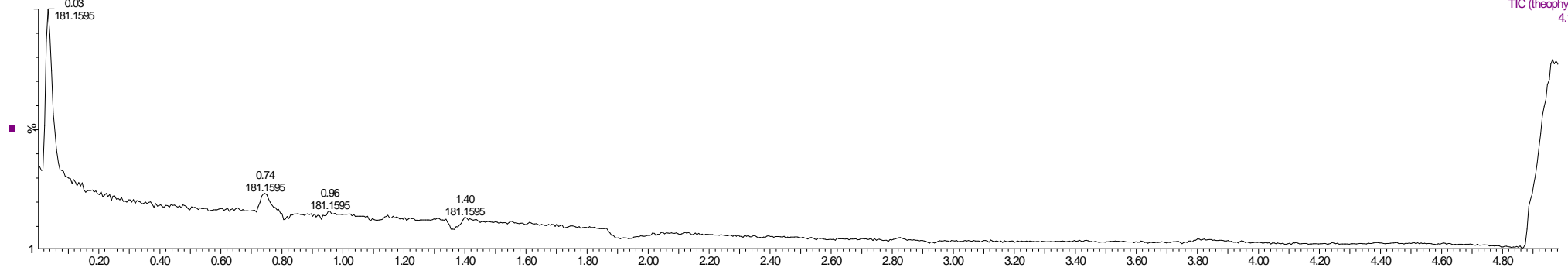
TIC (theobromine)

1.92e5



Ingmar

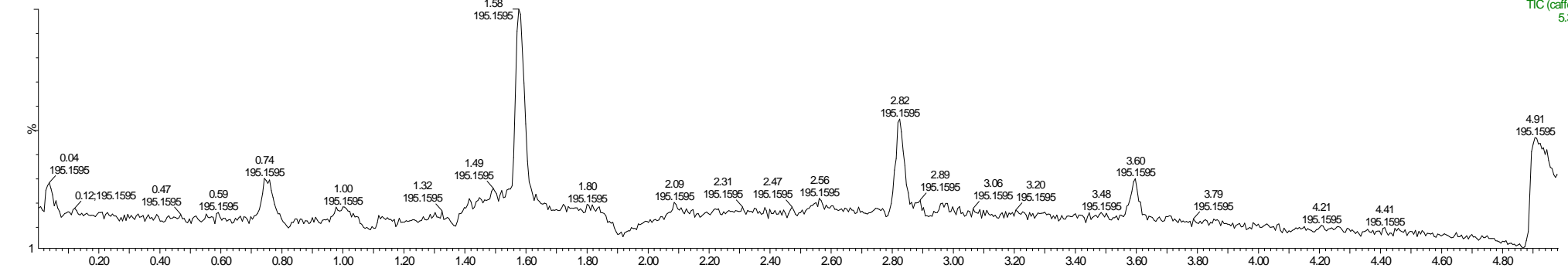
25102012 nu1 ohne p rot



25-Oct-2012 10:00:54

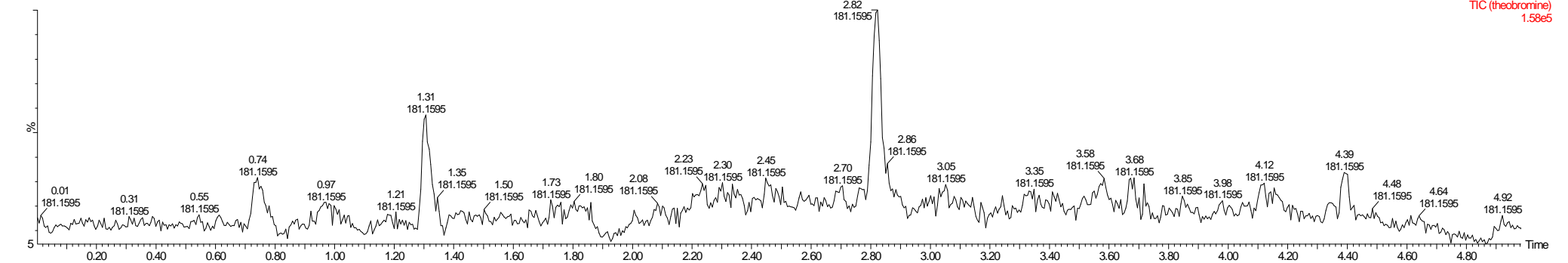
3: MRM of 4 Channels ES+  
TIC (theophylline)  
4.156

25102012 nu1 ohne p rot



2: MRM of 4 Channels ES+  
TIC (caffeine)  
5.30e5

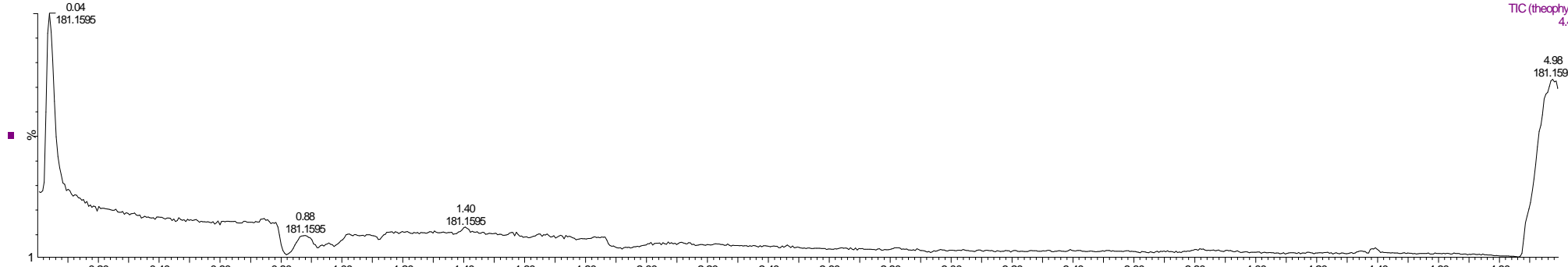
25102012 nu1 ohne p rot



1: MRM of 4 Channels ES+  
TIC (theobromine)  
1.58e5

Ingmar

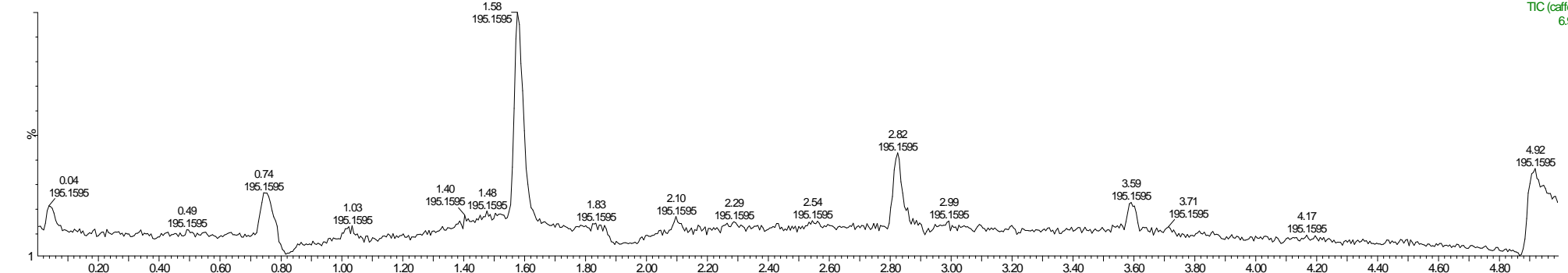
25102012 u ohne substrat



25-Oct-2012 09:55:24

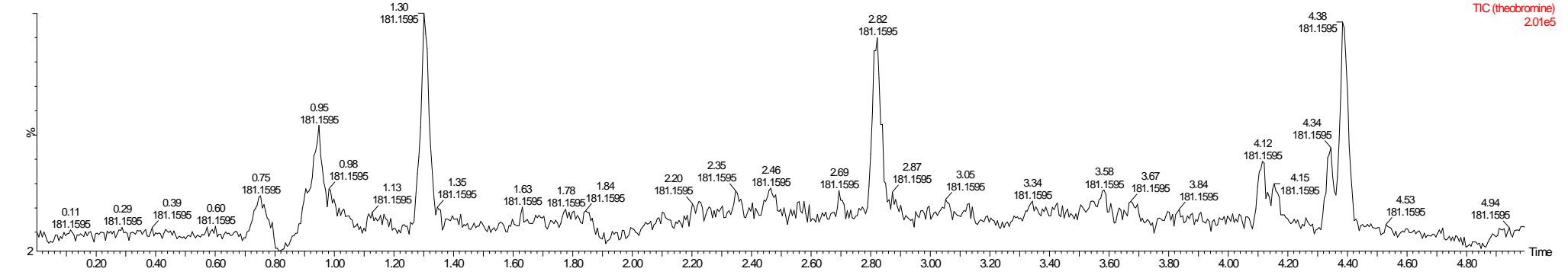
3: MRM of 4 Channels ES+  
TIC (theophylline)  
4.43e6

25102012 u ohne substrat



2: MRM of 4 Channels ES+  
TIC (caffeine)  
6.97e5

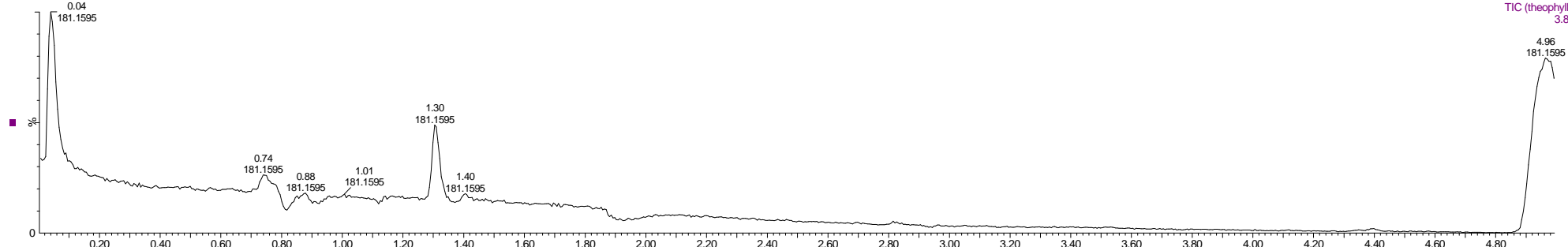
25102012 u ohne substrat



1: MRM of 4 Channels ES+  
TIC (theobromine)  
2.01e5

Ingmar

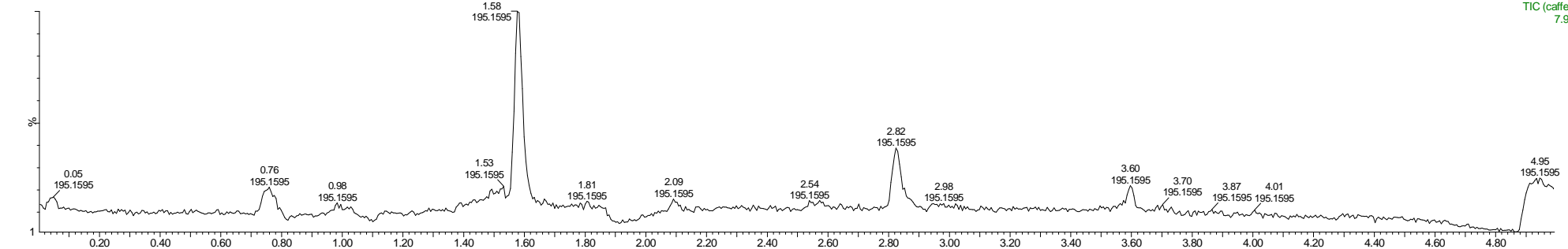
25102012 kasette3



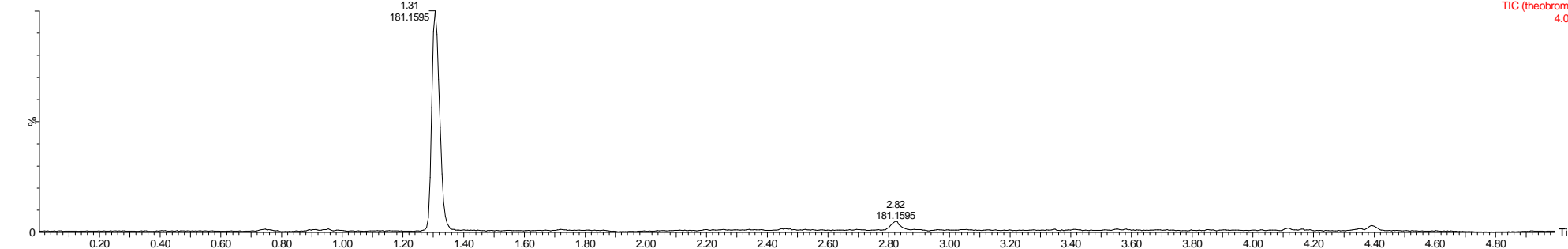
25-Oct-2012 09:33:16

3: MRM of 4 Channels ES+  
TIC (theophylline)  
3.80e6

25102012 kasette3



25102012 kasette3

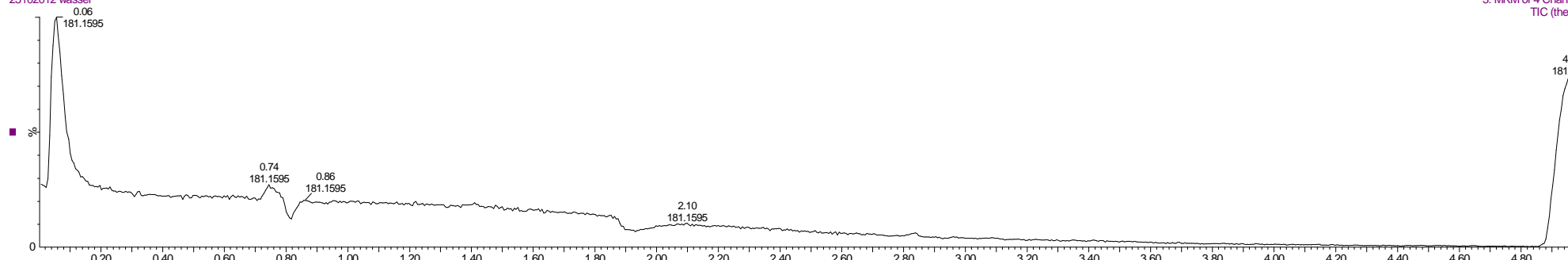


Ingmar

25102012 wasser

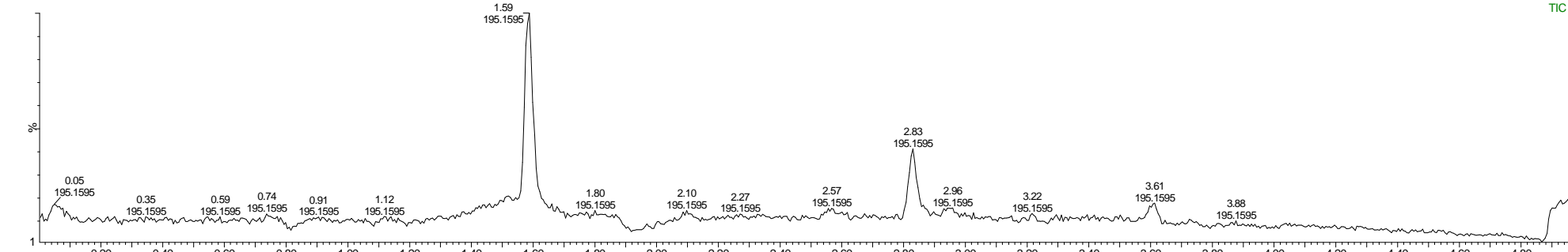
25-Oct-2012 09:22:16

3: MRM of 4 Channels ES+  
TIC (theophylline)  
4.10e6



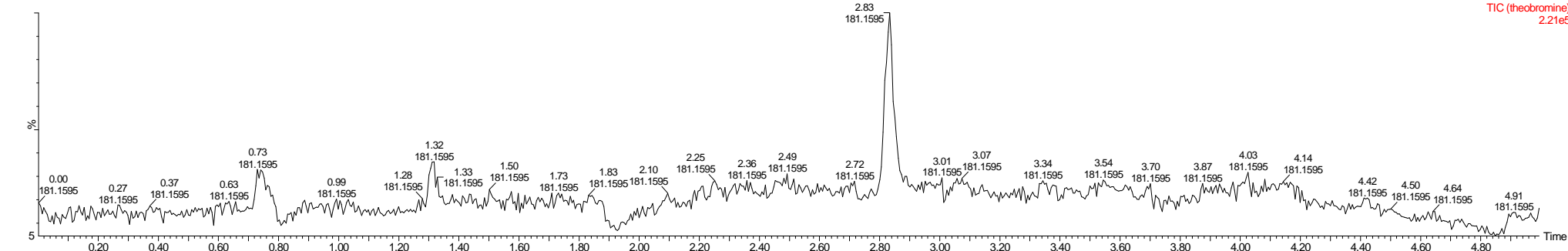
25102012 wasser

2: MRM of 4 Channels ES+  
TIC (caffeine)  
8.91e5



25102012 wasser

1: MRM of 4 Channels ES+  
TIC (theobromine)  
2.21e5

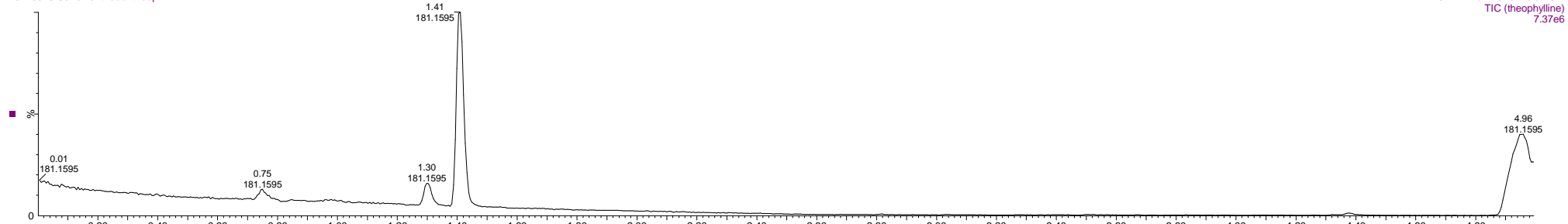


Ingmar

20120926 Caffeine+theob+theoph1

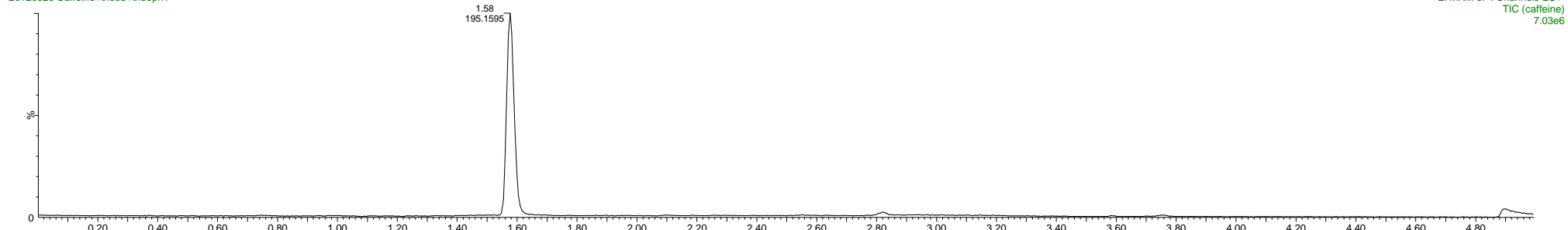
26-Sep-2012 11:17:34

3: MRM of 4 Channels ES+  
TIC (theophylline)  
7.37e6



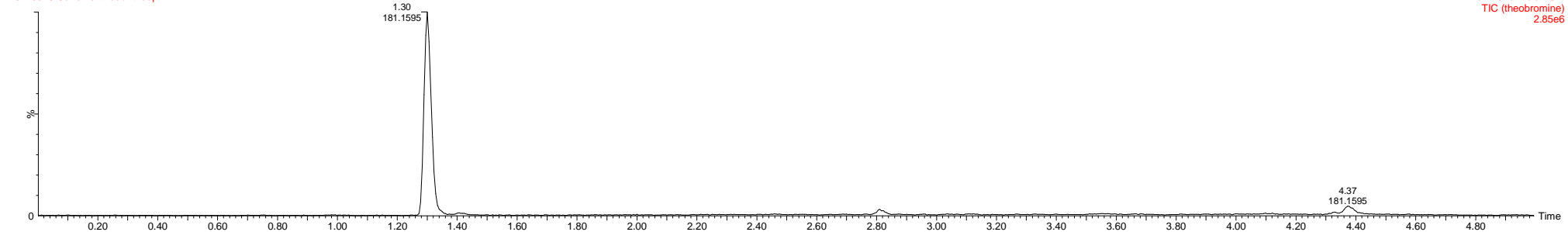
20120926 Caffeine+theob+theoph1

2: MRM of 4 Channels ES+  
TIC (caffeine)  
7.03e6



20120926 Caffeine+theob+theoph1

1: MRM of 4 Channels ES+  
TIC (theobromine)  
2.85e6



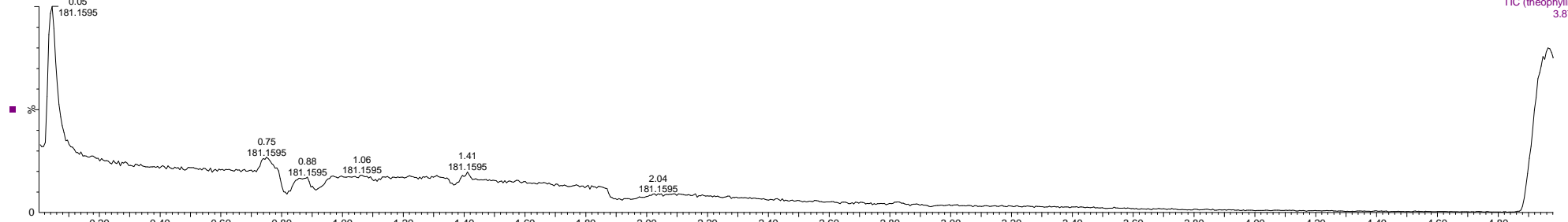


Ingmar

25102012 ptum 100

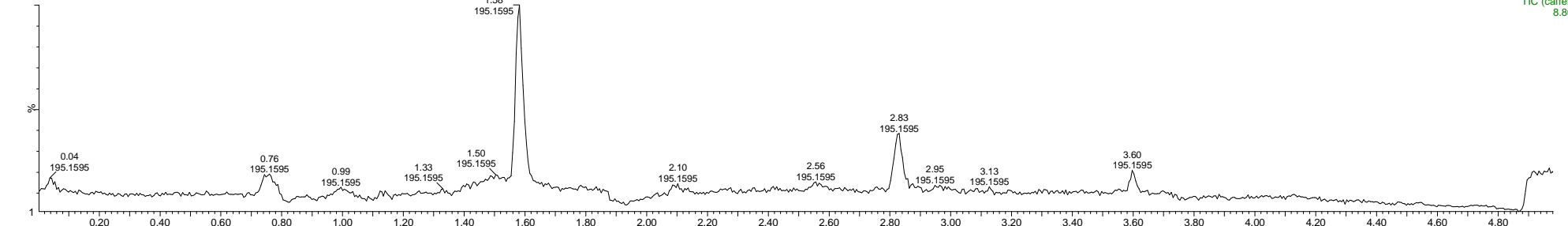
25-Oct-2012 09:27:48

3: MRM of 4 Channels ES+  
TIC (theophylline)  
3.87e6



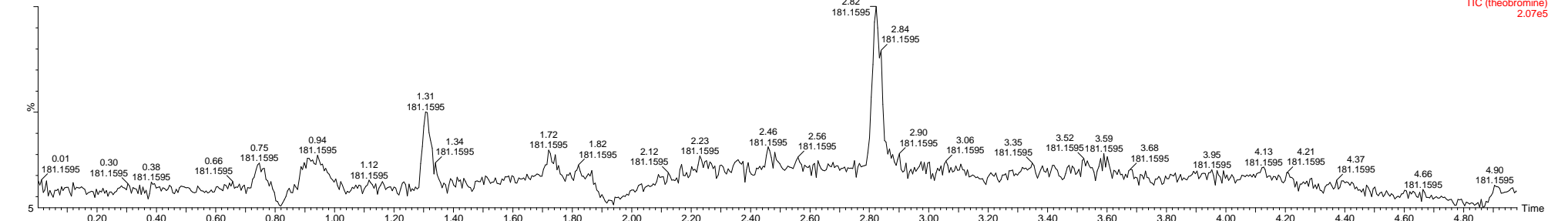
25102012 ptum 100

2: MRM of 4 Channels ES+  
TIC (caffeine)  
8.66e5



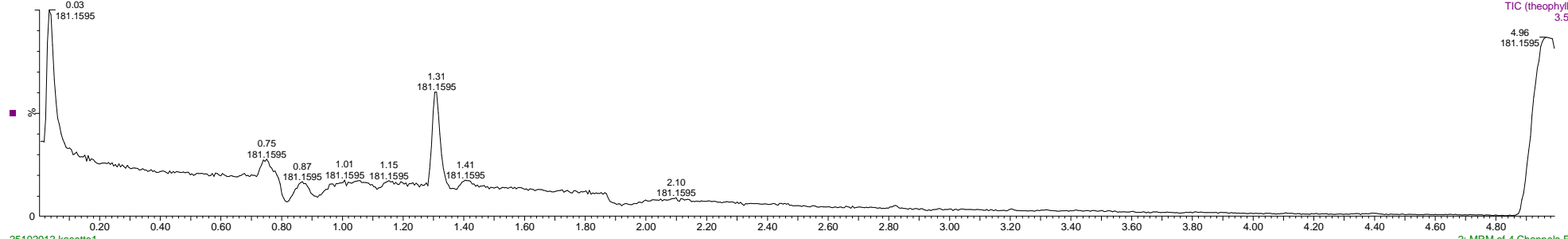
25102012 ptum 100

1: MRM of 4 Channels ES+  
TIC (theobromine)  
2.07e5



Ingmar

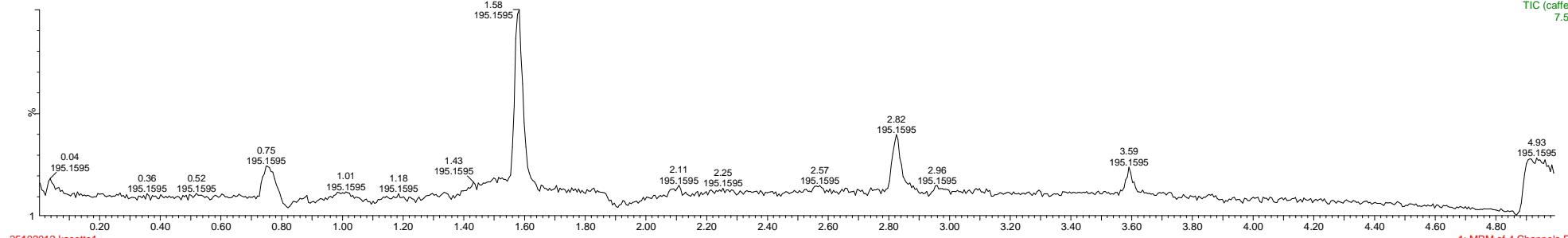
25102012 kasette1



25-Oct-2012 09:38:48

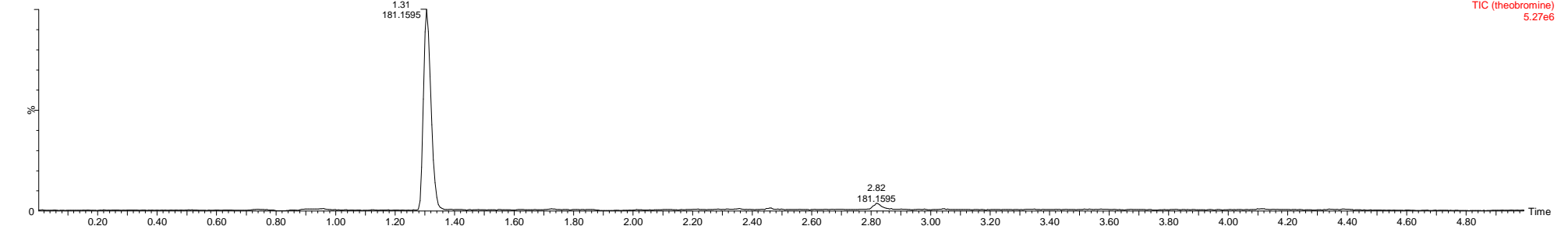
3: MRM of 4 Channels ES+  
TIC (theophylline)  
3.54e6

25102012 kasette1



2: MRM of 4 Channels ES+  
TIC (caffeine)  
7.54e5

25102012 kasette1



1: MRM of 4 Channels ES+  
TIC (theobromine)  
5.27e6